

# Frequently Asked Questions

SoftRobot Business Application Software Development Technology FAQ

## **Q. What is SoftRobot Technology? What is the need for such technology?**

Software Development is necessary evil for every business. How fast and at what cost your company manage to get it done is major decision factor. Manage requirements & change to ensure timely delivery is most important function in development.

There are two major elements of costs in software development:

1. Speed of development (Ideally from days to years).
2. Software Developers cost. (Ideally in range of US\$ 10-1000 / man-hours).

You need to increase speed of development at the same time you need to reduce costs to win the order. SoftRobot Technology is designed specifically to answer this problem.

SoftRobot means Software Robot designed to work like your paid programmer. Programmer's knowledge of business application development is fed in SoftRobot to achieve speed of development by eliminating coding as far as possible.

SoftRobot is a brand new, interactive, codeless, data driven, technology that eliminates 80% of the traditional software development cycle time from design to implementation, All WITHOUT generating any SOURCE code, recompiling OR possessing any language suite.

SoftRobot will help software developers to Analyze, Prototype, Develop, Test and Implement Business Applications Solutions in easy, fast & low cost manner.

Apart from RAD & CASE enabled Component based complex development methods, another method of documents-based applications development was required. Having to write code to perform bMOBILEERP or common operations places an unnecessary burden on the developer. A complete strategy was required to support both programmatic and codeless application development, to support all applications and developers. Hence codeless methodology was developed where coding is minimum.

Here codeless means we do not generate client-end code files like asp, jsp or exe for creating standard applications. Application Logic is stored in database itself. Our SoftRobot Engine then develops front ends by reading application logic stored in database. Advantage of using standard translator programs like SoftRobot engine is to reduce error and application development time.

Entire SoftRobot Technology is web based e-document management system.

## **Q. What do you mean by Documents in SoftRobot Technologies?**

Document means electronic Document. Documents in cyberspace works together to achieve real e-Business. e-Business is electronic Business methodology which is virtual compared to physical business. Electronic Documents are analogy of physical paper based documents. Once on your computer desktop, these documents can be retrieved effortlessly in seconds.

BMOBILEERP purpose of computerization is creating, managing & retrieving electronic documents. All software's available in market try to solve this bMOBILEERP purpose whether it is MS Office, SoftRobot, SAP, Auto CAD, Photo Shop, Web Pages etc. This software's provide bMOBILEERP facility to create, view or print various types of Documents. This software's like MS Office, SoftRobot etc. are document interpreters, builders and are called virtual machines. E.g. Word is a virtual machine, which replaces physical machine like typewriters.

Thousands of organizations around the world use electronic documents every day instead of paper documents to achieve e-Business. The reasons for this change are simple:

- Prevents lost records
- Saves storage space
- Manages records easily
- Finds documents quickly
- Makes documents remotely available
- Eliminates need for physical file cabinets
- Distribution become easy via email or internet
- Helps environment become pollution free

### ***A complete document management system comprises six elements:***

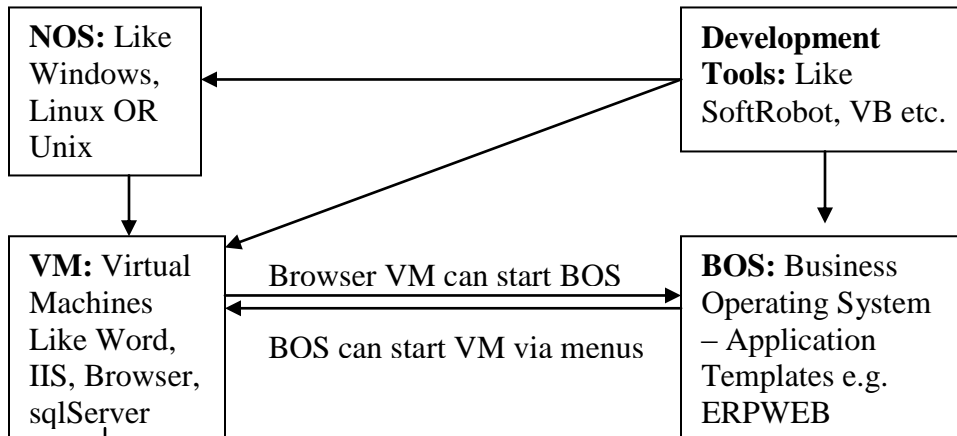
Documents are **entered or scanned** into the system. The document management system **stores** them somewhere on a hard drive or optical disk. The documents then get **indexed**. When a person later wants to read a document, they use the **retrieval** tools available in the document system. Which documents can be read and what actions performed on these documents is dependent on the access provided by the document management system. Every document system requires **security**. ***SoftRobot is a complete document management system comprises of all six elements as mentioned above.***

As document is container of information, similarly folders or registers are containers of documents. Group of physical files stored in NOS (Network Operating System) like Windows (We also called files as documents) are stored in a container or binder called Folder. Whereas group of physical records in BOS

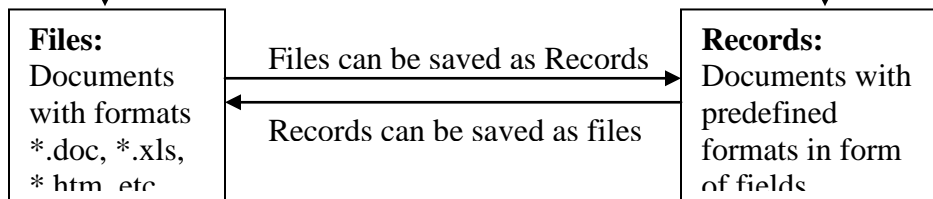
(Business Operating System) like ERPWEB (We also called records in database tables as documents) are stored in a container called Register.

**Q. Can you describe entire Document management vision of SoftRobot?**

**PART 1: SOFTWARE SYSTEMS**



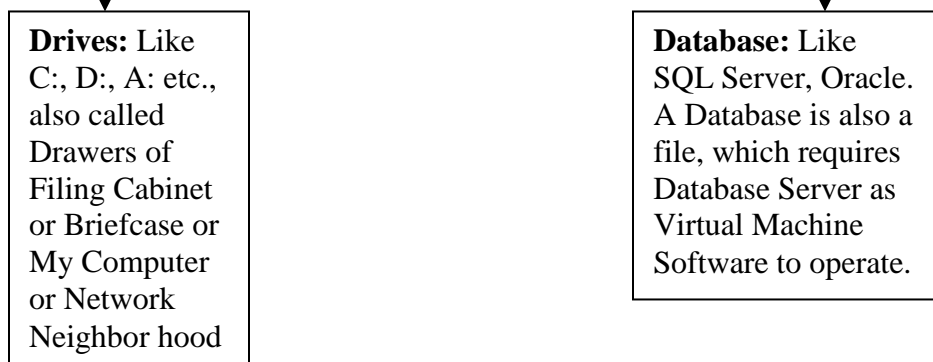
**PART 2: DOCUMENTS (e.g. Sales Order, Voucher, Purchase Order etc.)**



**PART 3: DOCUMENTS CONTAINERS (e.g. Folders or Registers)**



**PART 4: Folders stored in Drives and Registers stored in Database**



## Q. What do you mean by Applications in SoftRobot Technologies?

Despite all the perceived arguments, complexities and theories computers perform only 2 functions:

- **Capture Information** (add, edit, delete, capture, browse, process data)
- **Produce Information** (reports, spreadsheets, paper, electronic, web, wireless).

Any software application at end of day is information processing system, which captures and produces data in organized fashion. Ideally speaking SoftRobot development methodology maintains analogy of physical world – by storing information in container called document. The person who uses this document and its information is called user.

Thus SoftRobot development solution is document and user based development. It is important to Study physical world and try to map as it is in software. Do not think like programmers. Do not think in terms of Objects, Classes, DLLs & UMLs. Think simple and build simple.

Each Document is stored in container called Register. Physical files are usually stored in container called Folder (WorkRooms). Registers are stored in database, which looks like a big Filing Cabinet. Similarly Folders are stored in Operating systems drive based Filing Cabinets (c:, a: etc.).

An application is a group of documents, users, menus, database etc. as follows:

**Documents:** Every application can have documents of various type like :

- **Forms:** Where data is entered, modified, deleted or transferred.
- **Reports:** Where data is read only, organized and presented.

**Registers:** Every application can have various registers containing this documents like:

- **Open:** This means all documents in this register are open for add, edit, delete.
- **Approve:** This means all documents in this register are waiting for your approval.
- **OffHold:** This means all onhold documents in this register are waiting for offhold.
- **Closed:** This means all documents in this registers are successfully approved and closed and can be printed or emailed.
- **Rejected:** This means all documents in this registers are rejected, can also be printed or emailed.

- **Customized:** This register can be DTS – Data Transfer Services transferring certain data as per certain conditions.

**Menus:** Every application can have menus organized with different schemes as follows:

- **Menu Scheme 1:** Department wise menu organization
  - Department and Module name linked to module help
    - Procedure name with SubModule help linked
      - Document name with WorkRoom Folder Link
        - Registers name with functions like Add, Edit, Delete, Search Functions associated.
- **Menu Scheme 2:** Traditional Operation wise menu organization
  - Masters: One time documents entry to setup or implement system
  - Transactions: Daily Transaction Entries
  - Reports: Output read-only documents to produce organized results.
- **Menu Scheme 3:** Self-service customized Portal based menu as per roles

Now software's are also driven via individual user specific portals.

- Departments: Every company has departments
- Role based Portals: Every departments has people with roles
- Menu Screen as per Roles: Every role can be defined using documents

**Users:** Every application can have users with user manager

**Workflow:** Every user has to assign a user right to define workflow where specific documents with specific rights are available for action within register. If a user is allowed to access Open register then he can create or edit document. If a user is assigned to approve, he can Approve, Onhold or Reject document etc.

All the above application requires software structure, which end-users will hardly understand in that:

These application structures can be described further as follows:

**Document Types:** There can be many document types

- **Master only Form:** Documents with single database Table
- **Master/Details Form:** Documents with Master and Details linked database Tables
- **DTS Document:** Data Transformation services documents, which transfers data from one database table to another with certain logic in between. This is useful for EAI(Enterprise Application Integration).
- **Reports:** Read-only data generated in HTML/XML for real B2B links.
- **Linked files:** Files in MS Office formats are linked to applications.

**Documents Database:** There can be associated documents database

- **Tables:** Actual place where the data will be stored
- **Views:** Pull data from various tables and views as per requirements.

**Q: You said Software Engineering is still baby – in its infancy stage? Explain how?**

- If hardware technology efficiencies are doubling every 12 to 18 months why hasn't the time required, number of people and expertise to develop and implement software applications decreased to correspond with these expanded technical abilities?
- In recent years computer hardware prices have dropped dramatically. Why have the costs for software or consulting services continued to escalate?
- If the brand name software and consulting companies truly perform and deliver as advertised why don't they offer a guarantee of success to customers?
- Has high cost branded software system saved the client money, enhances customer relations and brings value to shareholders? Check it yourself. Whose interests are the MNCs or big Brand vendors really looking out for?
- All above things shows that there is a need for software, which develops software there by reducing software development cycle time and cost by reducing number of developers developing it.
- SoftRobot provides a totally new Software Engineering Methodology.

**Q. Compare RAD & SoftRobot Development methodology step by step?**

**CASE & RAD Tools (VB, VC++)**

- Draw UML Diagram
- Create Classes
- Create Objects
- Set Properties
- Program Events
- Create Database
- Create Tables
- Create Fields
- Link Front-end Objects
- Create Menus
- Link Form to Menu
- Run: Compile/Interpret

**New SoftRobot Tools (6 Managers)**

- Draw Business Flow
- Create Users/Roles
- Create Menu
- Create Application
- Document Name
- Document Type
- Assign User rights
- Assign Menu rights
- Edit Applications
- Define Doc Parameters
- Modify default settings
- Refresh Menu & Run

**WHAT'S NEW?** - is a common phrase often used when greeting a friend. If we were to ask this question to most in the Information Technology Industry we

would probably be told about a new version of some existing software product or technology. The basis of the IT industry is now comprised of "the same old stuff being marketed as innovation". SoftRobot is new tech. & not version upgrade

### **Q. What are parts of SoftRobot Product?**

Following parts are contents of SoftRobot product suite:

1. **SoftServer: Run-time Engine:** Interpreter for codeless programs.
2. **SoftRobot: Development Tools:** Codeless program development tools. There are development and testing tools available in this and they are Application, Reports, Menu, Workflow, Testing & Database Managers.
3. **ERPWEB: Application Templates:** Ready-to-use codeless applications. This business server contains: CRM, SCM, FRM, MRP, FRM, HRM,ITM

### **Q. What is SoftRobot Engine or Application Server and what does it do?**

Our SoftRobot Engine develops front ends by reading application logic stored in database. Standardization is a key to major success. Today's IT professionals are grounded in repetition. Programming, screen, file and database handling are purely repetitive tasks with multiple tools across many environments. SoftRobot has identified and automated these repetitive processes via engineering methods of storing logic in decision matrix. SoftRobot engine is responsible for translation.

### **Q. How do you position SoftRobot Product in International Markets?**

#### **1. End-Users Markets**

- This includes end-users like Companies, Individuals, and Government etc. This user group is final buyer who will buy solutions and services from Providers 2,3,4 and 5.

#### **2. Business Application Software and Solution Provider Markets**

- This can be your company who buy software and solutions from below mentioned 3 providers to server end-users. This companies major earning lies in providing customized solutions to end-customer with regular services. This customer is major target group whom SoftRobot will be most useful. It can be companies IT/EDP Department or Software Solution provider or developers.

#### **3. Application Template Providers Markets**

- This includes Application Templates like SoftRobot ERPWEB, SAP etc.

#### **4. Software Development Tools and Technology Providers Markets**

- This includes Development Tools like SoftRobot Development Tools (Application, Reports, Menu Design, Workflow, Database and Testing Managers.), others are MS Visual Studio, IBM Visual Age etc.

#### **5. Software Infrastructure providers Markets**

- This includes servers like Operating systems, database servers, Application Servers etc. e.g. SoftServer Engine, MS Windows, SQL Server 2000, IIS etc.

### **Q. What services does SoftRobot offer via SoftService?**

- We can build or help you build the solution you desire on a fixed fee basis.
- We offer training on the SoftRobot technology and we can tailor training to build any application on your company's list of objectives. We offer rapid applications walk through sessions, hardware, configuration, and logic advice also.
- We can also customize and implement our ready to use ERP, CRM, and SCM Software application template called ERPWEB as per your companies' requirements.
- You can outsource your entire IT Department to us or hire our trained developers to your place for onsite development or we can also provide you offshore development facility. You can specify your requirements from time to time, we in turn make product more powerful to fit your requirement with our expert knowledge. It will be difficult or mostly impossible to have such expert people in your company who can work faster than our people at our low subscription cost that we offer. We bet that salary of people that you employ will be much higher than our annual services costs. We only charge you fixed subscription cost per annum, whereas industry work on US\$ 20 to 1000 per man-hours. Our biggest benefit is that we are based in India. You are intelligent enough to see your benefit.

### **Q. What applications can be built with SoftRobot?**

Any business document based application that resembles analogy to paper based physical world can be developed using SoftRobot. Some of the solutions we have developed include our ERPWEB System, which has most business solutions like CRM, SCM, MRP, SHOPFLOOR, INVENTORY, SHIPMENT, AP, AR, FRM, HRM, PAYROLL etc. It is what any organization requires. We have also build eHospital software as per famous HIPAA Policy of US Government.

### **Q. What support you provide with SoftRobot?.**

Training is provided to selected internal staff as part of the contracted fee. This training will position an organization to support internal development needs and end user requests. An SoftRobot help desk hot line is available to every client should the need ever arise. SoftRobot charges for support calls. Help line support is billed per call or email.

NOTE: There are two types of support calls, developer and end user. We have found that most questions are not related to SoftRobot but rather business



applications questions from end users. If your internal staff is not capable enough to answer ERPWEB or your Customer's business questions, then it is recommended that you hire our experts from India to perform said job.

### **Q. What is the SoftRobot Development Tools learning curve?**

Some visual Tools can take years to learn. Developing applications using visual tools often require teams of individuals possessing complex technical skills. Using SoftRobot legacy employees become immediately productive (most are fully up to speed in less than a week if they know bMOBILEERPs like HTML, ASP & SQL)

### **Q. What is ERPWEB learning curve?**

Every Business Application has business management theory behind it. It is important that you have people who understand business operations before operating an business application software. This is most important widely big subject for any company. There is no single company who can satisfy every business solutions and there never will be software that can provide complete business software that can fit every situation. That's why you as IT Company or IT Department exist. SoftRobot provides you new engineering methodology of speedy application development. SoftRobot also provides ready to use business application templates in form of ERPWEB Software which you can change to suite your customers particular business applications requirements. Learning curve for ERPWEB is steep and complicated, but there is a lot of business management help and various menus that makes things simpler and faster.

### **Q: What about documentation?**

SoftRobot is self-documenting technical parts. (Writes it's own documentation.) After making changes the system can reissue any/all documentation. The documentation (in English only) records and maintains the application program logic, user workflow logic, database linkage details etc.

ERPWEB documents where created manually. It consists of Business theory web based walktrough, powerpoint based screenshot presentations, testplan, etc.

There is general help like Website, Getting Started, FAQs etc.

### **Q. Please specify list of SoftRobot Development Tools?**

- Application Design Managers
- Reports Design Managers
- Menu Design Managers
- Workflow Design Managers
- Database Design Managers

- Testing Managers

In ERPWEB this tools are placed in one module called ITM.

### **Q. Specify Application architecture proposed by SoftRobot & ERPWEB?**

- 1. eApplication Server:** This is most important part of SoftRobot which will help you to run your e-business....
- 2. eBusiness Server:** This is business application templates which will run with help of SoftRobot eApplication server...
- 3. eNetwork Server:** This is network operating system software suits required to run ERPWEB Networks...
- 4. eHardware Server:** This is physical hardware required to run all above mentioned software's and your e-business..
- 5. eServices Suite:** This is services that you need to plan for converting your physical business to e-business.  
(Please refer product website at <http://www.erpweb.com> for details about this)

### **Q. Specify list of ERPWEB Modules as SoftRobot Application Templates?**

ERPWEB in all is a Business Operating System with following modules:

- 1. eMRP** is Manufacturing Resource Planning software to manage Man/Machine/Material/Money & Information.
- 2. eCRM** is Customer Relation management software that manages your e-Commerce with Customers.
- 3. eSCM** is Supply Chain Management software that manages your business with Suppliers & Business Associates.
- 4. eFRM** is Finance Resource Planning & management software that manages your financial business.
- 5. eHRM** is Human Resource Management software that manages your human resource business with Employees.
- 6. eITM** is Information Technology Management software that manages your information technology of company. These are SoftRobot Development Tools.  
(Please refer product website at <http://www.erpweb.com> for details about this)

### **Q. How to create application with SoftRobot Application Manager?**

1. Open Browser write application URL & Start ERPWEB.
2. From Main menu login to Application Manager.
3. Click on New Application Design link based menu.
4. Give Application Document name in short form less than 10 characters.
5. Check Master/Document Checkbox if you want to create Master/Detail type of application.
6. Select Submodule or Procedure this Document Application will belong to.
7. Select Users to define workflow like who will create, approve, offhold & print document.

8. Click on Create Document & Workflow button at bottom.
9. Now SoftRobot will create all program files, Database Tables & Views & will also enter required data in database to make application operational up, running and functional.

### **Q. How to Delete Application with SoftRobot Application Manager?**

1. From Main menu login to Application Manager.
2. Click on Delete Application Design link based menu.
3. Select Document or Application name that you want to delete.
4. Click on Delete Document & Workflow button to delete the application.
5. This will delete all Tables, Views, programs & data entry pertaining to these applications.

Remember your application should have sysgen flag off, by default all applications are system generated applications there by making this sysgen flag on. To make sysgen flag off – goto Document Manager open that document and make the flag off & save the document.

### **Q. How to Edit Application with SoftRobot Application Manager?**

#### **a. Edit Document Design**

1. From Main menu login to Application Manager.
2. Then select the application that you want to edit or modify. e.g TestModule.
3. Edit Document Design
4. If you want to modify application at Document level click on edit link.
5. This will allow you to change Document Name & Document grouping under submodule.
6. Plus this will also allow you to change the bMOBILEERP SQLs used to operate your document.
7. Edit Function Design
8. If you want to change filter or view of different functions you can edit SQL.
9. Edit / ADD Listbox Design
10. In order to create or modify list box automatically attached to your form you need this.
11. Create listbox by specifying link Table, Column from another table to this application table.
12. DETFLAG is checked when you are specifying Listbox data for details table.

#### **b. Edit Workflow Design**

1. If you want to change roles for users you can click on edit link.

2. Six roles like Create/Edit/Delete, Approve, Onhold/Offhold, Print, Reject are predefined.
3. You can add customized roles in the system also & can expand workflow of system.

#### c. Edit Database Design

1. You can Add or Delete fields to Master or Details Table of your application database.
2. You can also modify View of application Master or Details Tables of your application database.
3. You can also modify business logic behind the application through Stored Procedures & Triggers.

#### d. Edit Report Design

1. The Report Document that is automatically created by ERPWEB can be programmed using many tools mentioned in Report Manager section. The report can be in various formats depending on tools through which it was created. The reports can only be edited with specific tools through which it was created. e.g Report created using MS Excel can only be edited using MS Excel. You can only browser or execute data using ERPWEB and Internet Explorer browser.
2. When you goto Edit mode in Application design you will see that in DADDRESS Field a report file name along with the format (\*.asp, \*.doc, \*.xls, \*.ppt, \*.rpt etc..) is specified. No SQLs are stored. You can edit the file name associated with report. You can also modify user access rights for these reports.

#### **Q. How to add more parameters or fields in a document?**

Goto Application Manager. Select document you want to add fields. Click Edit. Goto Edit Database Design. Add field name, select data type and click on Add Field button. Similarly by clicking on delete field link, you can delete field.

#### **Q. How to change menu name of register linked to an application?**

Goto Application Manager. Select document you want to modify. Click Edit. Goto Function Design. Click on register menu you want to edit. Modify text in DNAME Field. Your menu will change.

#### **Q. How to change Title of the document?**

Goto Application Manager. Select document you want to modify. Click Edit. Goto Function Design. Click on register you want to edit. Modify text in TITLE Field. Your document & register title will change.

### **Q. How to change workflow or user rights for an application?**

Login to Workflow Manager to manage workflow operations.

### **Q. How to change menu for an application?**

Login to Menu Design Manager to manage department wise menu tree.

### **Q. How to create report or linked document for an application?**

- Goto ERPWEB Report Manager & click on Create Report Link.
- In Report Name text box supply appropriate report name.
- In Report URL address supply file name with URL for customized or 3rd party reports formats (\*.xls, \*.doc, \*.asp).
- If you are creating customized reports with 3rd party Reporting Tools select "Manual Report File" option.
- If you are creating automatic reports with help of ERPWEB select Tabular or Columnar Report Formats. In this report format you need to specify via which SQL this report will bring data from ERPWEB Database Server.
- Select under which document you want to link this report as menu. This will group report under particular Department --> Procedure --> Document --> ReportName
- Select which user will access this reports by default. You can create more users access from ERPWEB Workflow Manager.

### **Q. How to use asp templates in designing fresh asp documents?**

You can use existing asp files as reference program templates to generate other programs similar in nature. All SoftRobot and ERPWEB Programs are open source written using ASP, ADO, VBScript, JavaScript and SQL Language.

### **Q. What are Hardware & Software requirements for SoftRobot & ERPWEB?**

**Development System:** Minimum you require Pentium based PC with minimum 64MB RAM, which can run atleast Windows 98, PWS and SQL Server 2000 MSDE is required to operate SoftRobot & ERPWEB. If you are using Linux, then you also require Apache web server and Sun's chilli ASP Plug-ins to run SoftRobot and ERPWEB. SQL Server cannot work on Linux. In this case you need to transfer SQL Database into Oracle, Sybase or DB2 using DTS Services.

**Production Systems:** It is advisable to use ERPWEB & SoftRobot on Windows 2000 server with IIS5 installed. You will also require SQL Server 2000 database server. You may use Linux or Sun Solaris Unix with Sun's Chilli ASP Plugins with Apache web server. You need atleast P4 with 1GB RAM and 40GB Hard disk.

**Q. What are the hardware space requirements?**

The processing power of the SoftRobot Engine is so efficiently designed that it runs in less than 1% of the space of existing products in the marketplace. This means no exe execution or loading to slow you down. The technology fits on a single cd-rom disk and can include complex applications with hundreds of screens. It will occupy minimum 50MB of your hard disk space.

**Q. Can you compare advantages of SoftRobot web based applications technology with traditional windows or consol based applications?**

**Document Centric v/s Program Centric Systems**

Feature	Document Web Centric	Windows Program Centric	Console Program Centric
Example	Hotmail, SoftRobot, ERPWEB, WindowsXP, mySAP, Office XP.	Eudora, SAP R/3, EX, Windows95, MS Office 7.	Pine, Tally, DOS, WS, Lotus123.
Generation	IIIrd, Latest & upcoming	IInd & dying	Ist & Outdated
Concept Analogy	Electronic Document IN Window Interface as an analogy to Paper Document.	Group of Windows = Window Pollution.	Single Window interface.
Technology Used	Web Application Platform Independent Internet Multimedia Technology with n tier C/S which can be used from any computer, anywhere	Windows based EXE GUI Application Programming bulky 2tier C/S Technology.Used with Proprietary LAN or WAN	ASCII Text based GUIless EXE. No Multimedia possible. Dull User Interface. Used with Dumb Servers or Clients.
Languages Used	Free used for Internet like HTML, Java, VRML, XML, ASP, CGI, JS, VBScript, JHTML, VoML, SQL & ODBC.	Proprietary & Costly like VB, PB, VC++, Delphi, Oracle D2K, SAP ABAP4 etc.	Outdated primitive bMOBILEERP technology like C/C++, COBOL, BMOBILEERP, FoxBase etc
Installation	Installation at each Client NOT Required, only copying of files at server required.	Full fledge Installation on Client & Server Required from CD.	Single machine installation required with settings.
Modifications	Only Server Program needs to be modified after any modification in GUI Front End, Business Logic or Databases.	All Client Machines needs to be re-installed after minor modification.	Only Server Program needs to be modified after any modification in program
Clients Platform	Any easy to learn & use browser IE5 or NN5 based Client required on any Operating Systems like Windows, Mac, Linux	Only Windows version 3.11/95/98 based clients supported with installation.	Only DOS & Windows version 3.11/95/98 based standalone clients might be supported during

	or Unix.		installation.
Navigation	All documents are linked in Internet Fashion, so it is easy to navigate at click of mouse.	Open documents through complicated open dialog box.	Open documents through complicated open dialog box or Text Commands.
Multi-Threading	Full fledge multithreading real-time technology which give power of servers.	Only O.S level threading provided w/o real-time access	Not Possible
Working	It can work on Internet, Intranet or Extranet.	Works only on 2tier C/S Lan or Wan.	Works on Dumb Servers & Clients.
Files & Sizes	Files of very small size that can easily travel over network around the globe.	Huge Size bulky EXE Files that cannot travel over the Network	Small Size GUIless EXE Files can travel over the Network
Source Code	Can be Partially Hidden or Fully Open	Fully Hidden	Fully Hidden
Virus	Not Possible	Fully Virus Prone	Fully Virus Prone
Success Ratio & Life	Internet works on this technology for years without version update or obsolesce. You find less errors on Internet than Windows. Mostly new applications are developed using this.	Small life with proprietary technology, which keeps on changing every six months. This technology is changing its role by becoming component development system for 3rd generation technology.	No life with this technology as companies producing this technology has either gone bankrupt or has stopped selling software's & support.
Results	Best, Easy to Use, Open Source & Free.	Outdated, Proprietary & Costly.	Totally outdated & useless.

***Its suicide to go in for Program Centric Technology in Internet era***

**Q. Can you summarize what SoftRobot is and what it is not?**

**WHAT IT IS**



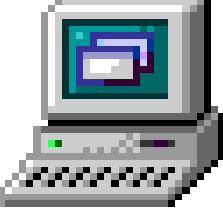

SoftRobot is the first truly data driven codeless development technology tool that can handle all your projects from a single application to your enterprise software requirements. With SoftRobot a developer or Business Analyst can easily create and change another developers work. With SoftRobot there is virtually no learning curve. SoftRobot is like real life document based development tool.

**WHAT IT IS NOT**

SoftRobot is not a toolkit that programmers use to glue modules together nor is it a visual product that requires a long learning curve to effectively use and support. Today's visual tools and databases literally take years to learn and effectively utilize. These products often require a team of "specialists" to design and implement a complete application. Creating solutions by gluing these complex

tools together has caused untold corporate disasters, cost overruns and cancelled projects. Traditional DCOM and CORBA Classes and Objects have created complex programming world with infinite errors & incompatibilities. SoftRobot limits usage of this Classes upto DOM, ASP & ADO APIs. Limited use reduces learning curve and complexity. You are allowed to over ride SoftRobot methodology with traditional methods wherever necessary. Many program files in ERPWEB are written in traditional methods, as SoftRobot cannot produce it automatically. For latest information visit our websites at [www.softrobot.net](http://www.softrobot.net) & [www.erpweb.com](http://www.erpweb.com).

**Q. What target systems can use applications developed by SoftRobot?**

			
<p>Mobile Phones with SMS &amp; WAP Capabilities</p>	<p>Pocket PC or Palm Tops with Internet Browser</p>	<p>Desktop PCs with Internet Browsers on any O.S</p>	<p>Televisions with set top boxes build with Internet Browsers</p>

Above-mentioned target client-end devices can directly access information from SoftRobot developed applications. SoftRobot automatically produces SMS & WAP formats for Mobile Phones, HTML 3.2 Formats for Pocket PCs, G3 Mobiles, Palm Tops & Television, and HTML 5.0 Formats for Desktop PCs.

**Q. What tools SoftRobot provide to build real-time B2B e-Business system?**

SoftRobot has EAI (Enterprises Application Integration) tool via its direct Document DTS Register(Data Transformation Services), which transfers data from one application database to other application database of same or different types.

SoftRobot can produce reports in XML format so that it can directly be provided to outside business associates, so that end-to-end e-Business can be achieved without releasing architecture of entire system.

SoftRobot can read and update its database from any 3<sup>rd</sup> party XML or Excel files with the help of its Document Upload facility.

SoftRobot Agent Technology can produce business intelligent alerts for mobiles in sms formats and for other devices in html or email formats.



**Q. Kindly specify security features available in SoftRobot?.**

In SoftRobot at bottom of every document before you do actions like Add, Edit, Delete, Approve, Onhold, OffHold you will find a signature box. The signature and password is same in SoftRobot. You need to provide your login password as signature. You can use standard web security techniques like SSL – to protect data traveling on network by way of encrypting it. By using digital signatures or digital certificates – so that only people with specific signatures can only open the website or email. You can use different port number for your web server also.

**Q. Kindly specify installation procedure for SoftRobot Products?**

**Installing for Windows 98 system to be used by less than 10 users**

Step 1: Install PWS Web Server

Step 2: Install MSDE2000 Database Server

Step 3: Install SoftRobot Development Tools and Engine

Step 4: Install SoftRobot Database with ERPWEB Application Template and Sample Data OR

Step 4: Install SoftRobot Database with ERPWEB Application Template and Blank Data OR

Step 4: Install SoftRobot Database without ERPWEB Application Template

Step 5: Configure Database Server

Step 6: Configure Web Server

Step 7: Start SoftRobot

**Installing for Windows 2000/XP Server system to be used by more than 10 users**

Step 1: Install IIS5.5 Web Server

Step 2: Install SQL Server 2000 Database Server

Step 3: Install SoftRobot Development Tools and Engine

Step 4: Install SoftRobot Database with ERPWEB Application Template and Sample Data OR

Step 4: Install SoftRobot Database with ERPWEB Application Template and Blank Data OR

Step 4: Install SoftRobot Database without ERPWEB Application Template

Step 5: Configure Database Server

Step 6: Configure Web Server

Step 7: Start SoftRobot

**Installing for Linux or Sun solaris Server system to be used by more than 10 users**

Step 1: Install Apache Web Server with Sun's Chillisoft ASP

Step 2: Install Linux or Unix specific Database Server

Step 3: Install SoftRobot Development Tools and Engine

Step 4: Install SoftRobot Database for Unix with ERPWEB Application Template and Sample Data OR

Step 4: Install SoftRobot Database for Unix with ERPWEB Application Template and Blank Data OR

Step 4: Install SoftRobot Database for Unix without any Application Template

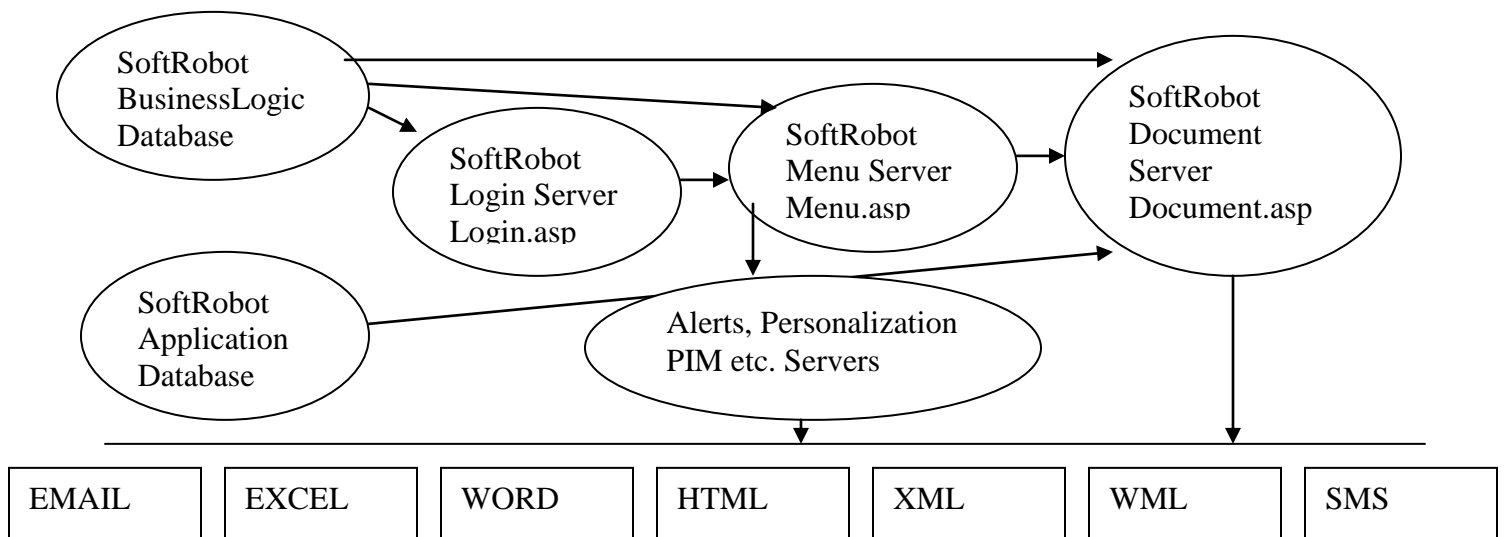
Step 5: Configure Database Server

Step 6: Configure Web Server

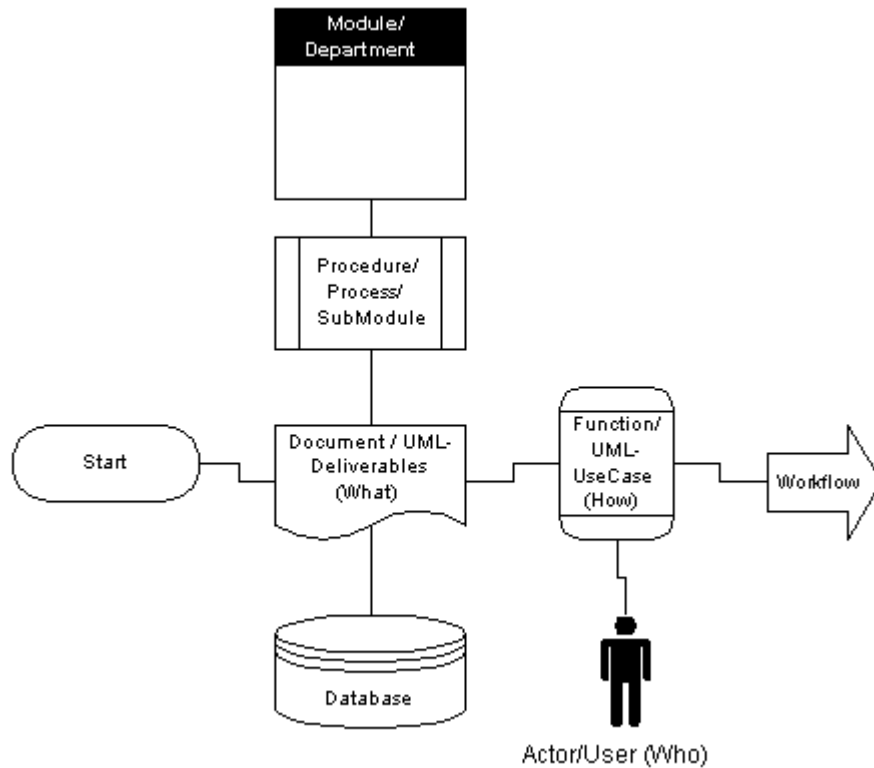
Step 7: Start SoftRobot

Note: You may require other servers like Transaction Server, Mobile internet server, Message Que server, email server, chat server, news server etc. depending on your usage of SoftRobot technology and its applications.

**Q. Can you define architecture of SoftRobot Engine or SoftServer?**



**Q. Can you define UML & TQM Notation represented by SoftRobot?.**



**Fig: Overall architecture SoftRobot way which is combination of International UML & TQM Notations.**

**Q. What are ERPWEB business benefits to companies or firms?**

### **Business Benefits**

#### **INVENTORY**

- Reduction in Inventory cost.
- Reduction in Storage Space.

#### **PURCHASE:**

- Reduction in Purchase Material Costs.
- Reduce Order Processing delays & costs
- Improve potential vendor list.

#### **SALES:**

- Increased Sales Turnover & Market reach
- Reduce Order processing delays & costs
- Reduce Marketing Costs.

#### **FINANCE:**

- Better Cash flow management.
- e-Payment System = fast transactions.
- Reduced payment processing delays
- Reduce Accounting Costs.

#### **PRODUCTION:**

- Reduction in scrap, rework & obsolescence costs.

- Increased Machine Utilization
- Increased Plant Utilization & Capacity
- Increased Production Rate
- Reduce Production delays & costs

**MANPOWER:**

- Increased Labour Productivity
- Increased Manpower Utilization
- Increased Manpower Productivity
- Increased Manpower availability
- Reduced Manpower Costs

**TECHNOLOGY:**

- Cut information technology costs
- Reduce up gradation / obsolesce cost
- Improve Supply Chain Management
- Reduce Business Cycle Time

**DOCUMENTS:**

- Reduce Storage & Handling space
- Reduce Storage & Handling costs
- Reduce cost due to paper delays
- Reduce paper & printing costs

**COMMUNICATION:**

- Reduce Communication costs
- Increase Communication frequency

**MANAGEMENT:**

- Improved Management information
- Improved Management Control
- Improved Management Decisions

**COPYRIGHT 2005 Ashish Shah @ softrobot.net [ashish@erpweb.com](mailto:ashish@erpweb.com)**

**MobileERP Softech P Ltd.**

**www.erpweb.com**